

*Australian National
Budgerigar Championship Show
Hosted by Budgerigar Council of Tasmania*



Show Result Book

Burnie, Tasmania 2009

Also available online: <http://www.national2009.com>



Australian National Budgerigar Council

35th Annual Australian National Budgerigar Show

Hosted by: *The Budgerigar Council of Tasmania*

<http://www.national2009.com>

Burnie Civic Centre - Burnie, Tasmania

23rd and 24th May 2009

Overall Points

Victoria	467
New South Wales	442
South Queensland	387
South Australia	299
Western Australia	254
Queensland North & Central	233
Tasmania	226

2009 Judges:

Neil Love

John Skoric

Matt Campbell

Ian Schnieder



Hosting the 35th Annual Australian National Budgerigar Show

See our website for all the latest information and results: <http://www.national2009.com>

35th Annual Australian National Budgerigar Show

Burnie, Tasmania - May 2009

CLASS NUMBER	1		2		3		4		5		6		7		8		9		10		11		12		13		14		15		16		17		18		19		20		21		22		FINAL TOTALS					
VARIETY	NORMAL GREEN		NORMAL GREY GREEN		NORMAL BLUE		NORMAL GREY		BLACK EYED SELF COLOUR		LUTINO		ALBINO		CLEAR WING		GREY WING		CINNAMON WING		SPANGLE DOUBLE FACTOR		OPALINE NORMAL WING		OPALINE AOSV		CLEAR BODY		LACE WING		FALLOW		YELLOW FACED BLUE		SPANGLE		DOMINANT PIED		DANISH RECESSIVE PIED		CRESTED		ASV / ASC HENS							
	PLAC	POINTS	PLAC	POINTS	PLAC	POINTS	PLAC	POINTS	PLAC	POINTS	PLAC	POINTS	PLAC	POINTS	PLAC	POINTS	PLAC	POINTS	PLAC	POINTS	PLAC	POINTS	PLAC	POINTS	PLAC	POINTS	PLAC	POINTS	PLAC	POINTS	PLAC	POINTS	PLAC	POINTS	PLAC	POINTS	PLAC	POINTS	PLAC	POINTS	PLAC	POINTS	PLAC	POINTS	PLAC	POINTS	PLAC	POINTS	PLAC	POINTS
TASMANIA	F 9 6	E 14 1	D 9 6	C 11 4	B 7 8	A 9 6	D 9 6	C 3 12	B 10 5	A 10 5	G 10 5	F 13 2	E 13 2	D 12 3	C 14 1	B 9 6	G 10 5	A 3 12	F 10 5	E 3 12	G 4 11	A 11 4	I 14 1	J 10 5	K 12 3	L 14 1	M 12 3	N 6 9	K 8 7	L 13 2	M 9 6	N 9 6	H 9 6	I 11 4	J 12 3	K 14 1	L 10 5	M 5 10	H 13 2	N 8 7	I 12 3	J 10 5	H 10 5	N 10 5						
Sub Totals	7 7	6 13	9 22	5 27	11 38	15 53	13 66	14 80	11 91	11 102	11 113	6 119	5 124	4 128	6 134	16 150	7 157	19 176	8 184	17 201	16 217	9 226																											226	
QUEENSLAND NORTH & CENTRAL	G 8 7	F 7 8	E 6 9	D 9 6	C 11 4	B 7 8	E 10 5	D 10 5	C 12 3	B 13 2	A 14 1	G 9 6	F 10 5	E 3 12	D 13 2	C 11 4	A 14 1	B 4 11	G 13 2	F 1 14	A 9 6	B 14 1	H 12 3	I 8 7	J 10 5	K 13 2	L 8 7	M 14 1	J 13 2	K 14 1	L 11 4	M 6 9	N 2 13	H 6 9	I 14 1	J 13 2	K 11 4	L 10 5	N 9 6	M 7 8	H 9 6	I 6 9	N 11 4	M 12 3						
Sub Totals	10 10	15 25	14 39	8 47	11 58	9 67	7 74	6 80	7 87	11 98	14 112	15 127	6 133	14 147	6 153	9 162	7 169	19 188	8 196	23 219	10 229	4 233																											233	
VICTORIA	D 3 12	C 4 11	B 1 14	A 1 14	G 4 11	F 1 14	B 5 10	A 5 10	G 6 9	F 3 12	E 6 9	D 2 13	C 1 14	B 1 14	A 9 6	G 3 12	E 2 13	F 6 9	D 2 13	C 2 13	E 3 12	F 5 10	H 12 3	I 3 12	J 11 4	N 7 8	H 8 7	I 3 12	J 2 13	K 7 8	L 12 3	M 2 13	N 11 4	H 6 9	I 8 7	K 4 11	J 5 10	L 6 9	M 4 11	K 6 9	J 6 9									
Sub Totals	22 22	17 39	21 60	26 86	24 110	19 129	24 153	24 177	17 194	20 214	23 237	20 257	22 279	20 299	14 313	26 339	25 364	10 374	27 401	21 422	22 444	23 467																											467	
NEW SOUTH WALES	C 7 8	B 3 12	A 2 13	G 5 10	F 9 6	E 2 13	A 2 13	G 4 11	F 1 14	E 1 14	D 3 12	C 5 10	B 5 10	A 4 11	G 1 14	F 7 8	D 1 14	E 2 13	C 7 8	B 5 10	D 1 14	E 8 7	L 11 4	M 5 10	N 4 11	H 2 13	I 3 12	J 11 4	N 7 8	H 8 7	I 3 12	J 2 13	K 7 8	L 12 3	M 2 13	N 11 4	H 6 9	I 8 7	K 4 11	J 5 10	L 6 9	M 4 11	K 6 9	J 6 9						
Sub Totals	12 12	22 34	24 58	23 81	18 99	17 116	21 137	18 155	26 181	27 208	20 228	13 241	23 264	15 279	23 302	15 317	25 342	23 365	17 382	21 403	23 426	16 442																											442	
SOUTH QUEENSLAND	E 4 11	D 11 4	C 5 10	B 7 8	A 6 9	G 3 12	C 3 12	B 6 9	A 4 11	G 5 10	F 8 7	E 7 8	D 4 11	C 8 7	B 5 10	A 2 13	F 5 10	G 9 6	E 5 10	D 11 4	F 14 1	G 1 14	J 2 13	K 1 14	L 11 4	M 8 7	N 10 5	H 8 7	L 14 1	M 9 6	N 5 10	H 4 11	I 4 11	J 1 14	K 6 9	L 10 5	M 4 11	N 4 11	I 6 9	H 1 14	J 4 11	K 12 3	I 13 2	H 3 12						
Sub Totals	24 24	18 42	14 56	15 71	14 85	19 104	13 117	15 132	21 153	21 174	18 192	22 214	20 234	12 246	21 267	24 291	19 310	20 330	21 351	7 358	3 361	26 387																											387	
SOUTH AUSTRALIA	B 1 14	A 2 13	G 7 8	F 12 3	E 5 10	D 5 10	G 12 3	F 7 8	E 13 2	D 14 1	C 5 10	B 4 11	A 3 12	G 6 9	F 2 13	E 13 2	C 11 4	D 11 4	B 8 7	A 14 1	C 7 8	D 7 8	M 6 9	N 6 9	H 3 12	I 10 5	J 1 14	K 13 2	H 11 4	I 2 13	J 14 1	K 11 4	L 13 2	M 10 5	N 11 4	H 5 10	I 8 7	J 12 3	L 12 3	K 13 2	M 3 12	N 13 2	L 2 13	K 13 2						
Sub Totals	23 23	22 45	20 65	8 73	24 97	12 109	7 116	21 137	3 140	5 145	12 157	16 173	16 189	19 208	20 228	5 233	7 240	6 246	19 265	3 268	21 289	10 299																											299	
WESTERN AUSTRALIA	A 10 5	G 12 3	F 14 1	E 6 9	D 13 2	C 4 11	F 6 9	E 12 3	D 2 13	C 8 7	B 12 3	A 14 1	G 9 6	F 7 8	E 12 3	D 6 9	B 7 8	C 10 5	A 0 0	G 8 7	B 8 7	C 4 11	N 13 2	H 13 2	I 13 2	J 4 11	K 14 1	L 12 3	I 4 11	J 11 4	K 8 7	L 12 3	M 11 4	N 3 12	H 8 7	I 2 13	J 3 12	K 0 0	M 8 7	L 12 3	N 11 4	H 9 6	M 12 3	L 9 6						
Sub Totals	7 7	5 12	3 15	20 35	3 38	14 52	20 72	7 79	20 99	10 109	7 116	13 129	13 142	21 163	15 178	9 187	15 202	8 210	4 214	13 227	10 237	17 254																											254	
Final Placings	1st: Victoria		2nd: New South Wales		3rd: South Queensland		4th: South Australia		5th: Western Australia		6th: Queensland North & Central		7th: Tasmania																																					



Hosting the 35th Annual Australian National Budgerigar Show
 See our website for all the latest information and results: <http://www.national2009.com>

35th Annual Australian National Budgerigar Show

DAY 1 (ODD CLASSES) - Burnie, Tasmania - 23rd May 2009

CLASS NUMBER	1			3			5			7			9			11			13			15			17			19			21			
VARIETY	NORMAL GREEN			NORMAL BLUE			BLACK EYED SELF COLOUR			ALBINO			GREY WING			SPANGLE DOUBLE FACTOR			OPALINE AOSV			LACE WING			YELLOW FACED BLUE			DOMINANT PIED			CRESTED			FINAL TOTALS
	PLACE	POINTS		PLACE	POINTS		PLACE	POINTS		PLACE	POINTS		PLACE	POINTS		PLACE	POINTS		PLACE	POINTS		PLACE	POINTS		PLACE	POINTS		PLACE	POINTS		PLACE	POINTS		
TASMANIA	F	9	6	D	9	6	B	7	8	D	9	6	B	10	5	G	10	5	E	13	2	C	14	1	G	10	5	F	10	5	G	4	11	
	I	14	1	K	12	3	M	12	3	K	8	7	M	9	6	H	9	6	J	12	3	L	10	5	H	13	2	I	12	3	H	10	5	
Sub Totals		7	7		9	22		11	38		13	66		11	91		11	113		5	124		6	134		7	157		8	184		16	217	226
QUEENSLAND NORTH & CENTRAL	G	8	7	E	6	9	C	11	4	E	10	5	C	12	3	A	14	1	F	10	5	D	13	2	A	14	1	G	13	2	A	9	6	
	H	12	3	J	10	5	L	8	7	J	13	2	L	11	4	N	2	13	I	14	1	K	11	4	N	9	6	H	9	6	N	11	4	
Sub Totals		10	10		14	39		11	58		7	74		7	87		14	112		6	133		6	153		7	169		8	196		10	229	233
VICTORIA	D	3	12	B	1	14	G	4	11	B	5	10	G	6	9	E	6	9	C	1	14	A	9	6	E	2	13	D	2	13	E	3	12	
	K	5	10	M	8	7	H	2	13	M	1	14	H	7	8	J	1	14	L	7	8	N	7	8	J	3	12	K	1	14	J	5	10	
Sub Totals		22	22		21	60		24	110		24	153		17	194		23	237		22	279		14	313		25	364		27	401		22	444	467
NEW SOUTH WALES	C	7	8	A	2	13	F	9	6	A	2	13	F	1	14	D	3	12	B	5	10	G	1	14	D	1	14	C	7	8	D	1	14	
	L	11	4	N	4	11	I	3	12	N	7	8	I	3	12	K	7	8	M	2	13	H	6	9	K	4	11	L	6	9	K	6	9	
Sub Totals		12	12		24	58		18	99		21	137		26	181		20	228		23	264		23	302		25	342		17	382		23	426	442
SOUTH QUEENSLAND	E	4	11	C	5	10	A	6	9	C	3	12	A	4	11	F	8	7	D	4	11	B	5	10	F	5	10	E	5	10	F	14	1	
	J	2	13	L	11	4	N	10	5	L	14	1	N	5	10	I	4	11	K	6	9	M	4	11	I	6	9	J	4	11	I	13	2	
Sub Totals		24	24		14	56		14	85		13	117		21	153		18	192		20	234		21	267		19	310		21	351		3	361	387
SOUTH AUSTRALIA	B	1	14	G	7	8	E	5	10	G	12	3	E	13	2	C	5	10	A	3	12	F	2	13	C	11	4	B	8	7	C	7	8	
	M	6	9	H	3	12	J	1	14	H	11	4	J	14	1	L	13	2	N	11	4	I	8	7	L	12	3	M	3	12	L	2	13	
Sub Totals		23	23		20	65		24	97		7	116		3	140		12	157		16	189		20	228		7	240		19	265		21	289	299
WESTERN AUSTRALIA	A	10	5	F	14	1	D	13	2	F	6	9	D	2	13	B	12	3	G	9	6	E	12	3	B	7	8	A	0	0	B	8	7	
	N	13	2	I	13	2	K	14	1	I	4	11	K	8	7	M	11	4	H	8	7	J	3	12	M	8	7	N	11	4	M	12	3	
Sub Totals		7	7		3	15		3	38		20	72		20	99		7	116		13	142		15	178		15	202		4	214		10	237	254



Hosting the 35th Annual Australian National Budgerigar Show

See our website for all the latest information and results: <http://www.national2009.com>

NOTE: Calculations also include results from the even numbered classes

35th Annual Australian National Budgerigar Show

DAY 2 (EVEN CLASSES) - Burnie, Tasmania - 24th May 2009

CLASS NUMBER	2		4		6		8		10		12		14		16		18		20		22													
VARIETY	NORMAL GREY GREEN		NORMAL GREY		LUTINO		CLEAR WING		CINNAMON WING		OPALINE NORMAL WING		CLEAR BODY		FALLOW		SPANGLE		DANISH RECESSIVE PIED		ASV / ASC HENS		FINAL TOTALS											
	PLACE	POINTS	PLACE	POINTS	PLACE	POINTS	PLACE	POINTS	PLACE	POINTS	PLACE	POINTS	PLACE	POINTS	PLACE	POINTS	PLACE	POINTS	PLACE	POINTS	PLACE	POINTS												
TASMANIA	E	14	1	C	11	4	A	9	6	C	3	12	A	10	5	F	13	2	D	12	3	B	9	6	A	3	12	E	3	12	A	11	4	
	J	10	5	L	14	1	N	6	9	L	13	2	N	9	6	I	11	4	K	14	1	M	5	10	N	8	7	J	10	5	N	10	5	
<i>Sub Totals</i>		6	13		5	27		15	53		14	80		11	102		6	119		4	128		16	150		19	176		17	201		9	226	226
QUEENSLAND NORTH & CENTRAL	F	7	8	D	9	6	B	7	8	D	10	5	B	13	2	G	9	6	E	3	12	C	11	4	B	4	11	F	1	14	B	14	1	
	I	8	7	K	13	2	M	14	1	K	14	1	M	6	9	H	6	9	J	13	2	L	10	5	M	7	8	I	6	9	M	12	3	
<i>Sub Totals</i>		15	25		8	47		9	67		6	80		11	98		15	127		14	147		9	162		19	188		23	219		4	233	233
VICTORIA	C	4	11	A	1	14	F	1	14	A	5	10	F	3	12	D	2	13	B	1	14	G	3	12	F	6	9	C	2	13	F	5	10	
	L	9	6	N	3	12	I	10	5	N	1	14	I	7	8	K	8	7	M	9	6	H	1	14	I	14	1	L	7	8	I	2	13	
<i>Sub Totals</i>		17	39		26	86		19	129		24	177		20	214		20	257		20	299		26	339		10	374		21	422		23	467	467
NEW SOUTH WALES	B	3	12	G	5	10	E	2	13	G	4	11	E	1	14	C	5	10	A	4	11	F	7	8	E	2	13	B	5	10	E	8	7	
	M	5	10	H	2	13	J	11	4	H	8	7	J	2	13	L	12	3	N	11	4	I	8	7	J	5	10	M	4	11	J	6	9	
<i>Sub Totals</i>		22	34		23	81		17	116		18	155		27	208		13	241		15	279		15	317		23	365		21	403		16	442	442
SOUTH QUEENSLAND	D	11	4	B	7	8	G	3	12	B	6	9	G	5	10	E	7	8	C	8	7	A	2	13	G	9	6	D	11	4	G	1	14	
	K	1	14	M	8	7	H	8	7	M	9	6	H	4	11	J	1	14	L	10	5	N	4	11	H	1	14	K	12	3	H	3	12	
<i>Sub Totals</i>		18	42		15	71		19	104		15	132		21	174		22	214		12	246		24	291		20	330		7	358		26	387	387
SOUTH AUSTRALIA	A	2	13	F	12	3	D	5	10	F	7	8	D	14	1	B	4	11	G	6	9	E	13	2	D	11	4	A	14	1	D	7	8	
	N	6	9	I	10	5	K	13	2	I	2	13	K	11	4	M	10	5	H	5	10	J	12	3	K	13	2	N	13	2	K	13	2	
<i>Sub Totals</i>		22	45		8	73		12	109		21	137		5	145		16	173		19	208		5	233		6	246		3	268		10	299	299
WESTERN AUSTRALIA	G	12	3	E	6	9	C	4	11	E	12	3	C	8	7	A	14	1	F	7	8	D	6	9	C	10	5	G	8	7	C	4	11	
	H	13	2	J	4	11	L	12	3	J	11	4	L	12	3	N	3	12	I	2	13	K	0	0	L	12	3	H	9	6	L	9	6	
<i>Sub Totals</i>		5	12		20	35		14	52		7	79		10	109		13	129		21	163		9	187		8	210		13	227		17	254	254



Hosting the 35th Annual Australian National Budgerigar Show

See our website for all the latest information and results: <http://www.national2009.com>

NOTE: Calculations also include results from the odd numbered classes

35th Annual Australian National Budgerigar Show

Class Winners List

Burnie, Tasmania - May 2009

<i>Class</i>	<i>Winner</i>	<i>State</i>
NORMAL GREEN	D & R Lange	SA
NORMAL GREY GREEN	K Dunk	SQ
NORMAL BLUE	Sheppard & Flanagan	VIC
NORMAL GREY	A Rowe	VIC
BLACK EYED SELF COLOUR	P Glassenbury	SA
LUTINO	J Leong	VIC
ALBINO	Rowe Brothers	VIC
CLEAR WING	Sheppard & Flanagan	VIC
GREY WING	W Capper	NSW
CINNAMON WING	I Hanington	NSW
SPANGLE DOUBLE FACTOR	Charlton & Melbourne	VIC

<i>Class</i>	<i>Winner</i>	<i>State</i>
OPALINE NORMAL WING	H George	SQ
OPALINE AOSV	Sheppard & Flanagan	VIC
CLEAR BODY	P Thurn	VIC
LACE WING	R & T Waddington	NSW
FALLOW	P Thurn	Vic
YELLOW FACED BLUE	A & C Druery	NSW
SPANGLE	A Kent	SQ
DOMINANT PIED	P Thurn	VIC
DANISH RECESSIVE PIED	B Schuster	QNC
CRESTED	J & G Garces	NSW
ASV / ASC HENS	H George	SQ



Hosting the 35th Annual Australian National Budgerigar Show

See our website for all the latest information and results: <http://www.national2009.com>

35th Annual Australian National Budgerigar Show

Tasmania

Burnie, Tasmania - May 2009

CLASS NUMBER	CAGE LETTER	VARIETY	EXHIBITOR	RING NUMBER	PLACE	POINTS
1	F	NORMAL GREEN	T. Philpott	BCT-08-1259	9	6
	I		Blair & Poole	BP2-08-037	14	1
2	E	NORMAL GREY GREEN	Blair & Poole	BP2-08-027	14	1
	J		T. Philpott	TP1-08-051	10	5
3	D	NORMAL BLUE	Blair & Poole	BP2-08-038	9	6
	K		D. Bishop	DB1-08-086	12	3
4	C	NORMAL GREY	Blair & Poole	BP2-08-047	11	4
	L		Charlesworth Family	MC1-08-522	14	1
5	B	BLACK EYED SELF COLOUR	Blair & Poole	BP2-08-048	7	8
	M		Charlesworth Family	MC1-08-404	12	3
6	A	LUTINO	Barber Family	B4-08-075	9	6
	N		Barber Family	B4-08-051	6	9
7	D	ALBINO	K & B Fulton	F77-08-607	9	6
	K		Barber Family	B4-08-029	8	7
8	C	CLEAR WING	K & B Fulton	F77-08-716	3	12
	L		Blair & Poole	BP2-08-028	13	2
9	B	GREY WING	Home & Howard	BCT-08-1409	10	5
	M		K & B Fulton	F77-08-720	9	6
10	A	CINNAMON WING	J & J Fletcher	F1-08-110	10	5
	N		J & J Fletcher	F1-08-128	9	6
11	G	SPANGLE DOUBLE FACTOR	J & J Fletcher	F1-08-010	10	5
	H		K. Heron	KH1-08-018	9	6
12	F	OPALINE NORMAL WING	Charlesworth Family	MC1-08-422	13	2
	I		Charlesworth Family	MC1-08-475	11	4
13	E	OPALINE AOSV	J & J Fletcher	F1-08-101	13	2
	J		K & B Fulton	F77-08-651	12	3
14	D	CLEAR BODY	K & B Fulton	F77-08-640	12	3
	K		K & B Fulton	F77-08-644	14	1
15	C	LACE WING	J & J Fletcher	F1-08-001	14	1
	L		K & B Fulton	F77-08-753	10	5
16	B	FALLOW	K & B Fulton	F77-08-625	9	6
	M		Blair & Poole	BP2-08-151	5	10
17	G	YELLOW FACED BLUE	Home & Howard	HH2-08-019	10	5
	H		A. Johnson	BCT-08-1033	13	2
18	A	SPANGLE	Blair & Poole	BP2-08-230	3	12
	N		Home & Howard	HH2-08-080	8	7
19	F	DOMINANT PIED	Charlesworth Family	MC1-08-401	10	5
	I		Charlesworth Family	MC1-08-512	12	3
20	E	DANISH RECESSIVE PIED	Home & Howard	BCT-08-1426	3	12
	J		Home & Howard	BCT-08-1412	10	5
21	G	CRESTED	Blair & Poole	BP-08-158	4	11
	H		K & B Fulton	F77-08-747	10	5
22	A	ASV/ASC HENS	T. Philpott	BCT-08-1262	11	4
	N		J & J Fletcher	F1-08-015	10	5



Hosting the 35th Annual Australian National Budgerigar Show

See our website for all the latest information and results: <http://www.national2009.com>

Team Total: 226

35th Annual Australian National Budgerigar Show

Queensland North & Central

Burnie, Tasmania - May 2009

CLASS NUMBER	CAGE LETTER	VARIETY	EXHIBITOR	RING NUMBER	PLACE	POINTS
1	G	NORMAL GREEN	Jansen Family	PR-J1-023	8	7
	H		O'Callaghan Family	CBS-935	12	3
2	F	NORMAL GREY GREEN	O'Callaghan Family	CBS-854	7	8
	I		O'Callaghan Family	CBS-941	8	7
3	E	NORMAL BLUE	O'Callaghan Family	CBS-803	6	9
	J		O'Callaghan Family	CBS-945	10	5
4	D	NORMAL GREY	B.Schuster	CDB-BS-005	9	6
	K		Antonio Pisano	CBS-AP-076	13	2
5	C	BLACK EYED SELF COLOUR	B. Schuster	CDB-BS-027	11	4
	L		Antonio Pisano	CBS-AP-152	8	7
6	B	LUTINO	Michael Pace	MBS-954	7	8
	M		D&S Brooks	TBC-272	14	1
7	E	ALBINO	Stam family	CBS-608	10	5
	J		Antonio Pisano	CBS-AP-013	13	2
8	D	CLEAR WING	B.Schuster	CDB-BS-118	10	5
	K		Scott Eriksen	CBS-SE-134	14	1
9	C	GREY WING	O'Callaghan Family	CBS-475	12	3
	L		O'Callaghan Family	CBS-1103	11	4
10	B	CINNAMON WING	Michael Pace	MBS-MP-145	13	2
	M		O'Callaghan Family	CBS-865	6	9
11	A	SPANGLE DOUBLE FACTOR	Williamson Family	CBS-196	14	1
	N		Doug Wales	MBS-DW-046	2	13
12	G	OPALINE NORMAL WING	O'Callaghan Family	CBS-936	9	6
	H		Doug Wales	MBS-DW-100	6	9
13	F	OPALINE AOSV	Brian Lewandowsky	CBS-BL-6270	10	5
	I		Michael Pace	MBS-948	14	1
14	E	CLEAR BODY	Charlie Watson	MBS-CW-095	3	12
	J		Charlie Watson	MBS-CW-051	13	2
15	D	LACE WING	L & P Walmsley	CDB-408	13	2
	K		D & S Brooks	TBC-277	11	4
16	C	FALLOW	Michael Pace	MBS-MP-056	11	4
	L		Antonio Pisano	CBS-AP-175	10	5
17	A	YELLOW FACED BLUE	Bob Brown	MBS-BJ-044	14	1
	N		L & P Walmsley	CDB-LW-030	9	6
18	B	SPANGLE	Doug Wales	MBS-DW-014	4	11
	M		O'Callaghan Family	CBS-477	7	8
19	G	DOMINANT PIED	D & S Brooks	TBC-235	13	2
	H		Doug Wales	MBS-DW-048	9	6
20	F	DANISH RECESSIVE PIED	B. Schuster	CDB-BS-099	1	14
	I		Michael Pace	MBS-MP-119	6	9
21	A	CRESTED	Jansen Family	PR-J1-023	9	6
	N		B. Schuster	CDB-383	11	4
22	B	ASV/ASC HENS	L&P Walmsley	CDB-LW-031	14	1
	M		D&S Brooks	TBC-1827	12	3



Hosting the 35th Annual Australian National Budgerigar Show

Team Total: 233

See our website for all the latest information and results: <http://www.national2009.com>

35th Annual Australian National Budgerigar Show

Victoria

Burnie, Tasmania - May 2009

CLASS NUMBER	CAGE LETTER	VARIETY	EXHIBITOR	RING NUMBER	PLACE	POINTS
1	D	NORMAL GREEN	Sheppard & Flanagan	BS1-167	3	12
	K		J Leong	JL1-050	5	10
2	C	NORMAL GREY GREEN	Sheppard & Flanagan	BS1-122	4	11
	L		A Rowe	AR1-095	9	6
3	B	NORMAL BLUE	Sheppard & Flanagan	BS1-093	1	14
	M		J Kruisselbrink	JK3-106	8	7
4	A	NORMAL GREY	A Rowe	AR1-060	1	14
	N		G Rowe	GR9-008	3	12
5	G	BLACK EYED SELF COLOUR	Sheppard & Flanagan	BS1-023	4	11
	H		Sheppard & Flanagan	BS1-124	2	13
6	F	LUTINO	J Leong	JL1-016	1	14
	I		A Rowe	AR1-016	10	5
7	B	ALBINO	G O'Connell	GO2-083	5	10
	M		Rowe Brothers	JG2-012	1	14
8	A	CLEAR WING	Sheppard & Flanagan	CF1-217	5	10
	N		Sheppard & Flanagan	CF1-198	1	14
9	G	GREY WING	K,M and M Bridgeman	B3-015	6	9
	H		Sheppard & Flanagan	BS1-050	7	8
10	F	CINNAMON WING	I Hunter	IH1-049	3	12
	I		Sheppard & Flanagan	BS1-010	7	8
11	E	SPANGLE DOUBLE FACTOR	L Richardson	LR1-039	6	9
	J		Charlton & Melbourne	KC1-001	1	14
12	D	OPALINE NORMAL WING	I Hunter	IH1-044	2	13
	K		J Ennis	JE3-062	8	7
13	C	OPALINE AOSV	Sheppard & Flanagan	CF1-079	1	14
	L		G Rowe	GR9-179	7	8
14	B	CLEAR BODY	P Thurn	PT9-074	1	14
	M		P McInnes	PM1-025	9	6
15	A	LACE WING	S Rodney	SR1-303	9	6
	N		Wood & Drew	TD1-106	7	8
16	G	FALLOW	P Thurn	PT9-015	3	12
	H		P Thurn	PT9-053	1	14
17	E	YELLOW FACED BLUE	Smith & Meagher	AS10-005	2	13
	J		R Wilson	RW13-029	3	12
18	F	SPANGLE	I Hunter	IH1-073	6	9
	I		J Leong	JL1-059	14	1
19	D	DOMINANT PIED	P Thurn	PT9-048	2	13
	K		P Thurn	PT9-049	1	14
20	C	DANISH RECESSIVE PIED	Wood & Drew	TD1-014	2	13
	L		S & T Grech	ST1-080	7	8
21	E	CRESTED	Sheppard & Flanagan	BS1-150	3	12
	J		Sheppard & Flanagan	BS1-118	5	10
22	F	ASV/ASC HENS	J Leong	JL1-134	5	10
	I		Sheppard & Flanagan	BS1-180	2	13



Hosting the 35th Annual Australian National Budgerigar Show

See our website for all the latest information and results: <http://www.national2009.com>

Team Total: 467

35th Annual Australian National Budgerigar Show

New South Wales

Burnie, Tasmania - May 2009

CLASS NUMBER	CAGE LETTER	VARIETY	EXHIBITOR	RING NUMBER	PLACE	POINTS
1	C	NORMAL GREEN	J L'Estrange	NSW-JWL-055	7	8
	L		Paul Bayliss	OAS-PB8-016	11	4
2	B	NORMAL GREY GREEN	A & C Druery	NBC-ACD-103	3	12
	M		Gary Gazzard	NBC-GG-025	5	10
3	A	NORMAL BLUE	J Hewitt	NSW-JH-089	2	13
	N		R J Bucior	NSW-RB4-083	4	11
4	G	NORMAL GREY	M Chidel	NSW-4052	5	10
	H		P J Baker	MBC-128	2	13
5	F	BLACK EYED SELF COLOUR	P Dodd	NSW-1D-104	9	6
	I		W Cusack	MBC-WC-057	3	12
6	E	LUTINO	John Richardson	NBA-3R-037	2	13
	J		B & M Wise	NSW -BMW-091	11	4
7	A	ALBINO	G & M Watson	NSW-1W-187	2	13
	N		Nesbitt Family	NSW-NES-004	7	8
8	G	CLEAR WING	Geoff O'Connor	NBC-GO-048	4	11
	H		Geoff O'Connor	NBC-GO-066	8	7
9	F	GREY WING	Wally Capper	CBC-WAL-119	1	14
	I		K Seagrott	NSW-KS-363	3	12
10	E	CINNAMON WING	Ian Hanington	NBA-1H-192	1	14
	J		A & C Druery	NBC-ACD-167	2	13
11	D	SPANGLE DOUBLE FACTOR	Gary Gazzard	NSW-2MC-155	3	12
	K		G & M Chandler	NBC-GG-049	7	8
12	C	OPALINE NORMAL WING	M Chidel	NSW-4069	5	10
	L		G Schiller	SWN-1GS-118	12	3
13	B	OPALINE AOSV	V Kocoski	NSW-VK-042	5	10
	M		V Kocoski	NSW-VK-055	2	13
14	A	CLEAR BODY	John Richardson	NBA-3R-141	4	11
	N		Geoff Wood	BIS-4W-199	11	4
15	G	LACE WING	R & T Waddington	CBC-R&T-098	1	14
	H		Ian Hanington	NBA-1H-078	6	9
16	F	FALLOW	Ian Hanington	NBA-1H-084	7	8
	I		Ian Hanington	NBA-1H-071	8	7
17	D	YELLOW FACED BLUE	A & C Druery	NBC-ACD-169	1	14
	K		M & R Fellows	NBC-MRF-109	4	11
18	E	SPANGLE	Gary Gazzard	NBC-GG-047	2	13
	J		G & M Watson	NSW-1W-041	5	10
19	C	DOMINANT PIED	Wally Capper	CBC-WAL-067	7	8
	L		Wally Capper	CBC-WAL-032	6	9
20	B	DANISH RECESSIVE PIED	Don Harper	NBC-26H-007	5	10
	M		Smith & Parsons	NSW-MIC-067	4	11
21	D	CRESTED	J & G Garces	NSW -11765	1	14
	K		Col Squires	CBC-COL-095	6	9
22	E	ASV/ASC HENS	Ian Hanington	NBA-1H-023	8	7
	J		M Chidel	NSW-4120	6	9



Hosting the 35th Annual Australian National Budgerigar Show

See our website for all the latest information and results: <http://www.national2009.com>

Team Total: 442

35th Annual Australian National Budgerigar Show

South Queensland

Burnie, Tasmania - May 2009

CLASS NUMBER	CAGE LETTER	VARIETY	EXHIBITOR	RING NUMBER	PLACE	POINTS
1	E	NORMAL GREEN	G Menzies	BNS-7MH-013	4	11
	J		Alan Kent	SBS-AK-017	2	13
2	D	NORMAL GREY GREEN	H George	BNS-10G-083	11	4
	K		K Dunk	SBS-KD-053	1	14
3	C	NORMAL BLUE	C. Chiang	SCB-382	5	10
	L		H George	BNS-10G-053	11	4
4	B	NORMAL GREY	B. Hollingsworth	PR-042	7	8
	M		M Greber	SBS-MHG-009	8	7
5	A	BLACK EYED SELF COLOUR	G. Russell	BSB-116	6	9
	N		G. Russell	BSB-042	10	5
6	G	LUTINO	H George	BNS-10G-008	3	12
	H		C. Chiang	CB-306	8	7
7	C	ALBINO	H George	BNS-10G-293	3	12
	L		J Parish	ABS-JIM-040	14	1
8	B	CLEAR WING	H George	BNS-10G-237	6	9
	M		K Moreland	BNS-KM-062	9	6
9	A	GREY WING	E & L Miller	PR-3M-083	4	11
	N		E & L Miller	PR-3M-111	5	10
10	G	CINNAMON WING	E & L Miller	PR-3M-023	5	10
	H		E & L Miller	PR-3M-065	4	11
11	F	SPANGLE DOUBLE FACTOR	H George	BNS-10G-075	8	7
	I		E & L Miller	PR-3M-142	4	11
12	E	OPALINE NORMAL WING	C Lamb	ABS-1805	7	8
	J		H George	BNS-10G-185	1	14
13	D	OPALINE AOSV	B Smith	SBS-BS2-053	4	11
	K		H George	BNS-10G-385	6	9
14	C	CLEAR BODY	T Luxton & T Revie	ABS-309	8	7
	L		R. Sweeper	IBS-1429	10	5
15	B	LACE WING	B & J Jennings	WRB-2J-069	5	10
	M		B & J Jennings	WRB-2J-201	4	11
16	A	FALLOW	G & J Horrobin	PR-542	2	13
	N		G & J Horrobin	PR-1328	4	11
17	F	YELLOW FACED BLUE	B. Hollingsworth	PR-1384	5	10
	I		K Dunk	SBS-KD-094	6	9
18	G	SPANGLE	H George	BNS-10G-168	9	6
	H		Alan Kent	SBS-AK-022	1	14
19	E	DOMINANT PIED	H George	BNS-10G-038	5	10
	J		D. Estreich	SBS-5E-080	4	11
20	D	DANISH RECESSIVE PIED	J & J McAllister	PR-1JJ-100	11	4
	K		J & J McAllister	PR-1JJ-167	12	3
21	F	CRESTED	Johnston Family	WRB-166	14	1
	I		K & E Henricks	SCB-1429	13	2
22	G	ASV/ASC HENS	H George	BNS-10G-016	1	14
	H		B Smith	SBS-BS2-052	3	12



Hosting the 35th Annual Australian National Budgerigar Show

See our website for all the latest information and results: <http://www.national2009.com>

Team Total: 387

35th Annual Australian National Budgerigar Show

South Australia

Burnie, Tasmania - May 2009

CLASS NUMBER	CAGE LETTER	VARIETY	EXHIBITOR	RING NUMBER	PLACE	POINTS
1	B	NORMAL GREEN	D & R Lange	DRL-373	1	14
	M		Kakoschke & Rice	SA-4399	6	9
2	A	NORMAL GREY GREEN	Kakoschke & Rice	SA-4498	2	13
	N		Kakoschke & Rice	SA-4510	6	9
3	G	NORMAL BLUE	Stephen Elliott	SE-067	7	8
	H		Kakoschke & Rice	SA-1587	3	12
4	F	NORMAL GREY	P Glassenbury	PG-404	12	3
	I		M Loveridge	SA-2705	10	5
5	E	BLACK EYED SELF COLOUR	P Glassenbury	PG-422	5	10
	J		P Glassenbury	PG-418	1	14
6	D	LUTINO	M & R Rafferty	SA-685	5	10
	K		Stephen Elliott	SE-013	13	2
7	G	ALBINO	B & J Fisher	SA-1178	12	3
	H		Marshall Family	3M-025	11	4
8	F	CLEAR WING	Mulley & Stafford	JM-061	7	8
	I		Mulley & Stafford	JM-046	2	13
9	E	GREY WING	P Glassenbury	PG-432	13	2
	J		M Loveridge	SA-2757	14	1
10	D	CINNAMON WING	M Loveridge	SA-2709	14	1
	K		Mulley & Stafford	JM-093	11	4
11	C	SPANGLE DOUBLE FACTOR	G Edwards	GE-080	5	10
	L		G Edwards	GE-036	13	2
12	B	OPALINE NORMAL WING	Kakoschke & Rice	SA-4552	4	11
	M		G Edwards	GE-022	10	5
13	A	OPALINE AOSV	Kakoschke & Rice	SA-1488	3	12
	N		J & W Weidenhofer	WIN-036	11	4
14	G	CLEAR BODY	J & W Weidenhofer	WIN-068	6	9
	H		P & L Goddard	SA-2837	5	10
15	F	LACE WING	Marshall Family	3M-003	2	13
	I		Kakoschke & Rice	SA-4273	8	7
16	E	FALLOW	Kakoschke & Rice	SA-1480	13	2
	J		Kakoschke & Rice	SA-1684	12	3
17	C	YELLOW FACED BLUE	G Edwards	GE-007	11	4
	L		G Edwards	GE-033	12	3
18	D	SPANGLE	Kakoschke & Rice	SA-4382	11	4
	K		D & R Lange	DRL-430	13	2
19	B	DOMINANT PIED	Kakoschke & Rice	SA-4335	8	7
	M		Kakoschke & Rice	SA-1607	3	12
20	A	DANISH RECESSIVE PIED	J & W Weidenhofer	WIN-052	14	1
	N		P Johnston	PJJ-053	13	2
21	C	CRESTED	D & R Lange	DRL-464	7	8
	L		Kakoschke & Rice	SA-4387	2	13
22	D	ASV/ASC HENS	Kakoschke & Rice	SA-1448	7	8
	K		M Loveridge	SA-2711	13	2



Hosting the 35th Annual Australian National Budgerigar Show

See our website for all the latest information and results: <http://www.national2009.com>

Team Total: 299

35th Annual Australian National Budgerigar Show

Western Australia

Burnie, Tasmania - May 2009

CLASS NUMBER	CAGE LETTER	VARIETY	EXHIBITOR	RING NUMBER	PLACE	POINTS
1	A	NORMAL GREEN	G & G House	G&G 001	10	5
	N		G & D Armstrong	GDA 755	13	2
2	G	NORMAL GREY GREEN	G & D Armstrong	GDA 817	12	3
	H		G & G House	G&G 005	13	2
3	F	NORMAL BLUE	J & F McLaughlan	SWBC 409	14	1
	I		G & G House	G&G 103	13	2
4	E	NORMAL GREY	A Jaeschke	AJ 021	6	9
	J		J Lloyd	JL 020	4	11
5	D	BLACK EYED SELF COLOUR	L Larsen	LL 257	13	2
	K		L Larsen	LL 244	14	1
6	C	LUTINO	C & B Gearing	C&B 144	4	11
	L		C & B Gearing	C&B 052	12	3
7	F	ALBINO	C & B Gearing	C&B 026	6	9
	I		C & B Gearing	C&B 024	4	11
8	E	CLEAR WING	C & B Gearing	C&B 162	12	3
	J		G & G House	G&G 038	11	4
9	D	GREY WING	J Lloyd	JL 004	2	13
	K		C Alder	CA 020	8	7
10	C	CINNAMON WING	C & B Gearing	C&B 116	8	7
	L		G & D Armstrong	GDA 833	12	3
11	B	SPANGLE DOUBLE FACTOR	C & B Gearing	C&B 047	12	3
	M		G & D Armstrong	GDA 791	11	4
12	A	OPALINE NORMAL WING	J McMahon	DPS 315	14	1
	N		M Gearing	MG 350	3	12
13	G	OPALINE AOSV	J McMahon	DPS 361	9	6
	H		C & B Gearing	C&B 084	8	7
14	F	CLEAR BODY	J Lloyd	JL 033	7	8
	I		J Lloyd	JL 044	2	13
15	E	LACE WING	G & G House	G&G 102	12	3
	J		G & G House	G&G 003	3	12
16	D	FALLOW	G & G House	G&G 067	6	9
	K		NO ENTRY	N/A	0	0
17	B	YELLOW FACED BLUE	A Jaeschke	AJ 032	7	8
	M		J Kobilanski	JK 001	8	7
18	C	SPANGLE	C & B Gearing	C&B 076	10	5
	L		C & B Gearing	C&B 118	12	3
19	A	DOMINANT PIED	J Lloyd (BIRD DISQUALIFIED)	JL 023	0	0
	N		J Lloyd	JL 022	11	4
20	G	DANISH RECESSIVE PIED	C & B Gearing	C&B 168	8	7
	H		C & B Gearing	C&B 098	9	6
21	B	CRESTED	G Toy	GT 473	8	7
	M		C & B Gearing	C&B 157	12	3
22	C	ASV/ASC HENS	G & D Armstrong	GDA814	4	11
	L		G & D Armstrong	GDA 848	9	6



Hosting the 35th Annual Australian National Budgerigar Show

See our website for all the latest information and results: <http://www.national2009.com>

Team Total: 254

35th Annual Australian National Budgerigar Show

Individual Class Placings - Page 1

Burnie, Tasmania - May 2009

1	Normal Green		
<i>CAGE ID</i>	<i>EXHIBITOR</i>	<i>STATE</i>	<i>PLACE</i>
A	G & G House	WA	10
B	D & R Lange	SA	1
C	J L'Estrange	NSW	7
D	Sheppard & Flanagan	VIC	3
E	G Menzies	SQ	4
F	T. Philpott	TAS	9
G	Jansen Family	QNC	8
H	O'Callaghan Family	QNC	12
I	Blair & Poole	TAS	14
J	Alan Kent	SQ	2
K	J Leong	VIC	5
L	Paul Bayliss	NSW	11
M	Kakoschke & Rice	SA	6
N	G & D Armstrong	WA	13

Judged By: Neil Love & John Skoric

2	Normal Grey Green		
<i>CAGE ID</i>	<i>EXHIBITOR</i>	<i>STATE</i>	<i>PLACE</i>
A	Kakoschke & Rice	SA	2
B	A & C Druery	NSW	3
C	Sheppard & Flanagan	VIC	4
D	H George	SQ	11
E	Blair & Poole	TAS	14
F	O'Callaghan Family	QNC	7
G	G & D Armstrong	WA	12
H	G & G House	WA	13
I	O'Callaghan Family	QNC	8
J	T. Philpott	TAS	10
K	K Dunk	SQ	1
L	A Rowe	VIC	9
M	Gary Gazzard	NSW	5
N	Kakoschke & Rice	SA	6

Judged By: Matt Campbell & Ian Schneider

3	Normal Blue		
<i>CAGE ID</i>	<i>EXHIBITOR</i>	<i>STATE</i>	<i>PLACE</i>
A	J Hewitt	NSW	2
B	Sheppard & Flanagan	VIC	1
C	C. Chiang	SQ	5
D	Blair & Poole	TAS	9
E	O'Callaghan Family	QNC	6
F	J & F McLaughlan	WA	14
G	Stephen Elliott	SA	7
H	Kakoschke & Rice	SA	3
I	G & G House	WA	13
J	O'Callaghan Family	QNC	10
K	D. Bishop	TAS	12
L	H George	SQ	11
M	J Kruisselbrink	VIC	8
N	R J Bucior	NSW	4

Judged By: Matt Campbell & Ian Schneider

4	Normal Grey		
<i>CAGE ID</i>	<i>EXHIBITOR</i>	<i>STATE</i>	<i>PLACE</i>
A	A Rowe	VIC	1
B	B. Hollingsworth	SQ	7
C	Blair & Poole	TAS	11
D	B.Schuster	QNC	9
E	A Jaeschke	WA	6
F	P Glassenbury	SA	12
G	M Chidel	NSW	5
H	P J Baker	NSW	2
I	M Loveridge	SA	10
J	J Lloyd	WA	4
K	Antonio Pisano	QNC	13
L	Charlesworth Family	TAS	14
M	M Greber	SQ	8
N	G Rowe	VIC	3

Judged By: Neil Love & John Skoric

5	Black Eyed Self Colour		
<i>CAGE ID</i>	<i>EXHIBITOR</i>	<i>STATE</i>	<i>PLACE</i>
A	G. Russell	SQ	6
B	Blair & Poole	TAS	7
C	B. Schuster	QNC	11
D	L Larsen	WA	13
E	P Glassenbury	SA	5
F	P Dodd	NSW	9
G	Sheppard & Flanagan	VIC	4
H	Sheppard & Flanagan	VIC	2
I	W Cusack	NSW	3
J	P Glassenbury	SA	1
K	L Larsen	WA	14
L	Antonio Pisano	QNC	8
M	Charlesworth Family	TAS	12
N	G. Russell	SQ	10

Judged By: Neil Love & John Skoric

6	Lutino		
<i>CAGE ID</i>	<i>EXHIBITOR</i>	<i>STATE</i>	<i>PLACE</i>
A	Barber Family	TAS	9
B	Michael Pace	QNC	7
C	C & B Gearing	WA	4
D	M & R Rafferty	SA	5
E	John Richardson	NSW	2
F	J Leong	VIC	1
G	H George	SQ	3
H	C. Chiang	SQ	8
I	A Rowe	VIC	10
J	B & M Wise	NSW	11
K	Stephen Elliott	SA	13
L	C & B Gearing	WA	12
M	D&S Brooks	QNC	14
N	Barber Family	TAS	6

Judged By: Matt Campbell & Ian Schneider

35th Annual Australian National Budgerigar Show

Individual Class Placings - Page 2

Burnie, Tasmania - May 2009

7	Albino		
CAGE ID	EXHIBITOR	STATE	PLACE
A	G & M Watson	NSW	2
B	G O'Connell	VIC	5
C	H George	SQ	3
D	K & B Fulton	TAS	9
E	Stam family	QNC	10
F	C & B Gearing	WA	6
G	B & J Fisher	SA	12
H	Marshall Family	SA	11
I	C & B Gearing	WA	4
J	Antonio Pisano	QNC	13
K	Barber Family	TAS	8
L	J Parish	SQ	14
M	Rowe Brothers	VIC	1
N	Nesbitt Family	NSW	7

Judged By: Matt Campbell & Ian Schneider

8	Clear Wing		
CAGE ID	EXHIBITOR	STATE	PLACE
A	Sheppard & Flanagan	VIC	5
B	H George	SQ	6
C	K & B Fulton	TAS	3
D	B.Schuster	QNC	10
E	C & B Gearing	WA	12
F	Mulley & Stafford	SA	7
G	Geoff O'Connor	NSW	4
H	Geoff O'Connor	NSW	8
I	Mulley & Stafford	SA	2
J	G & G House	WA	11
K	Scott Eriksen	QNC	14
L	Blair & Poole	TAS	13
M	K Moreland	SQ	9
N	Sheppard & Flanagan	VIC	1

Judged By: Neil Love & John Skoric

9	Grey Wing		
CAGE ID	EXHIBITOR	STATE	PLACE
A	E & L Miller	SQ	4
B	Home & Howard	TAS	10
C	O'Callaghan Family	QNC	12
D	J Lloyd	WA	2
E	P Glassenbury	SA	13
F	Wally Capper	NSW	1
G	K,M and M Bridgeman	VIC	6
H	Sheppard & Flanagan	VIC	7
I	K Seagrott	NSW	3
J	M Loveridge	SA	14
K	C Alder	WA	8
L	O'Callaghan Family	QNC	11
M	K & B Fulton	TAS	9
N	E & L Miller	SQ	5

Judged By: Neil Love & John Skoric

10	Cinnamon Wing		
CAGE ID	EXHIBITOR	STATE	PLACE
A	J & J Fletcher	TAS	10
B	Michael Pace	QNC	13
C	C & B Gearing	WA	8
D	M Loveridge	SA	14
E	Ian Hanington	NSW	1
F	I Hunter	VIC	3
G	E & L Miller	SQ	5
H	E & L Miller	SQ	4
I	Sheppard & Flanagan	VIC	7
J	A & C Druery	NSW	2
K	Mulley & Stafford	SA	11
L	G & D Armstrong	WA	12
M	O'Callaghan Family	QNC	6
N	J & J Fletcher	TAS	9

Judged By: Matt Campbell & Ian Schneider

11	Spangle Double Factor		
CAGE ID	EXHIBITOR	STATE	PLACE
A	Williamson Family	QNC	14
B	C & B Gearing	WA	12
C	G Edwards	SA	5
D	Gary Gazzard	NSW	3
E	L Richardson	VIC	6
F	H George	SQ	8
G	J & J Fletcher	TAS	10
H	K. Heron	TAS	9
I	E & L Miller	SQ	4
J	Charlton & Melbourne	VIC	1
K	G & M Chandler	NSW	7
L	G Edwards	SA	13
M	G & D Armstrong	WA	11
N	Doug Wales	QNC	2

Judged By: Matt Campbell & Ian Schneider

12	Opaline Normal Wing		
CAGE ID	EXHIBITOR	STATE	PLACE
A	J McMahan	WA	14
B	Kakoschke & Rice	SA	4
C	M Chidel	NSW	5
D	I Hunter	VIC	2
E	C Lamb	SQ	7
F	Charlesworth Family	TAS	13
G	O'Callaghan Family	QNC	9
H	Doug Wales	QNC	6
I	Charlesworth Family	TAS	11
J	H George	SQ	1
K	J Ennis	VIC	8
L	G Schiller	NSW	12
M	G Edwards	SA	10
N	M Gearing	WA	3

Judged By: Neil Love & John Skoric

35th Annual Australian National Budgerigar Show

Individual Class Placings - Page 3

Burnie, Tasmania - May 2009

13 Opaline AOSV			
CAGE ID	EXHIBITOR	STATE	PLACE
A	Kakoschke & Rice	SA	3
B	V Kocoski	NSW	5
C	Sheppard & Flanagan	VIC	1
D	B Smith	SQ	4
E	J & J Fletcher	TAS	13
F	Brian Lewandowsky	QNC	10
G	J McMahon	WA	9
H	C & B Gearing	WA	8
I	Michael Pace	QNC	14
J	K & B Fulton	TAS	12
K	H George	SQ	6
L	G Rowe	VIC	7
M	V Kocoski	NSW	2
N	J & W Weidenhofer	SA	11

Judged By: Neil Love & John Skoric

14 Clear Body			
CAGE ID	EXHIBITOR	STATE	PLACE
A	John Richardson	NSW	4
B	P Thurn	VIC	1
C	T Luxton & T Revie	SQ	8
D	K & B Fulton	TAS	12
E	Charlie Watson	QNC	3
F	J Lloyd	WA	7
G	J & W Weidenhofer	SA	6
H	P & L Goddard	SA	5
I	J Lloyd	WA	2
J	Charlie Watson	QNC	13
K	K & B Fulton	TAS	14
L	R. Sweeper	SQ	10
M	P McInnes	VIC	9
N	Geoff Wood	NSW	11

Judged By: Matt Campbell & Ian Schneider

15 Lace Wing			
CAGE ID	EXHIBITOR	STATE	PLACE
A	S Rodney	VIC	9
B	B & J Jennings	SQ	5
C	J & J Fletcher	TAS	14
D	L & P Walmsley	QNC	13
E	G & G House	WA	12
F	Marshall Family	SA	2
G	R & T Waddington	NSW	1
H	Ian Hanington	NSW	6
I	Kakoschke & Rice	SA	8
J	G & G House	WA	3
K	D & S Brooks	QNC	11
L	K & B Fulton	TAS	10
M	B & J Jennings	SQ	4
N	Wood & Drew	VIC	7

Judged By: Matt Campbell & Ian Schneider

16 Fallow			
CAGE ID	EXHIBITOR	STATE	PLACE
A	G & J Horrobin	SQ	2
B	K & B Fulton	TAS	9
C	Michael Pace	QNC	11
D	G & G House	WA	6
E	Kakoschke & Rice	SA	13
F	Ian Hanington	NSW	7
G	P Thurn	VIC	3
H	P Thurn	VIC	1
I	Ian Hanington	NSW	8
J	Kakoschke & Rice	SA	12
K	NO ENTRY	WA	0
L	Antonio Pisano	QNC	10
M	Blair & Poole	TAS	5
N	G & J Horrobin	SQ	4

Judged By: Neil Love & John Skoric

17 Yellow Faced Blue			
CAGE ID	EXHIBITOR	STATE	PLACE
A	Bob Brown	QNC	14
B	A Jaeschke	WA	7
C	G Edwards	SA	11
D	A & C Druery	NSW	1
E	Smith & Meagher	VIC	2
F	B. Hollingsworth	SQ	5
G	Home & Howard	TAS	10
H	A. Johnson	TAS	13
I	K Dunk	SQ	6
J	R Wilson	VIC	3
K	M & R Fellows	NSW	4
L	G Edwards	SA	12
M	J Kobilanski	WA	8
N	L & P Walmsley	QNC	9

Judged By: Neil Love & John Skoric

18 Spangle			
CAGE ID	EXHIBITOR	STATE	PLACE
A	Blair & Poole	TAS	3
B	Doug Wales	QNC	4
C	C & B Gearing	WA	10
D	Kakoschke & Rice	SA	11
E	Gary Gazzard	NSW	2
F	I Hunter	VIC	6
G	H George	SQ	9
H	Alan Kent	SQ	1
I	J Leong	VIC	14
J	G & M Watson	NSW	5
K	D & R Lange	SA	13
L	C & B Gearing	WA	12
M	O'Callaghan Family	QNC	7
N	Home & Howard	TAS	8

Judged By: Matt Campbell & Ian Schneider

35th Annual Australian National Budgerigar Show

Individual Class Placings - Page 4

Burnie, Tasmania - May 2009

19 Dominant Pied			
CAGE ID	EXHIBITOR	STATE	PLACE
A	J Lloyd (BIRD DISQUALIFIED)	WA	0
B	Kakoschke & Rice	SA	8
C	Wally Capper	NSW	7
D	P Thurn	VIC	2
E	H George	SQ	5
F	Charlesworth Family	TAS	10
G	D & S Brooks	QNC	13
H	Doug Wales	QNC	9
I	Charlesworth Family	TAS	12
J	D. Estreich	SQ	4
K	P Thurn	VIC	1
L	Wally Capper	NSW	6
M	Kakoschke & Rice	SA	3
N	J Lloyd	WA	11

Judged By: Matt Campbell & Ian Schneider

20 Danish Recessive Pied			
CAGE ID	EXHIBITOR	STATE	PLACE
A	J & W Weidenhofer	SA	14
B	Don Harper	NSW	5
C	Wood & Drew	VIC	2
D	J & J McAllister	SQ	11
E	Home & Howard	TAS	3
F	B. Schuster	QNC	1
G	C & B Gearing	WA	8
H	C & B Gearing	WA	9
I	Michael Pace	QNC	6
J	Home & Howard	TAS	10
K	J & J McAllister	SQ	12
L	S & T Grech	VIC	7
M	Smith & Parsons	NSW	4
N	P Johnston	SA	13

Judged By: Neil Love & John Skoric

21 Crested			
CAGE ID	EXHIBITOR	STATE	PLACE
A	Jansen Family	QNC	9
B	G Toy	WA	8
C	D & R Lange	SA	7
D	J & G Garces	NSW	1
E	Sheppard & Flanagan	VIC	3
F	Johnston Family	SQ	14
G	Blair & Poole	TAS	4
H	K & B Fulton	TAS	10
I	K & E Henricks	SQ	13
J	Sheppard & Flanagan	VIC	5
K	Col Squires	NSW	6
L	Kakoschke & Rice	SA	2
M	C & B Gearing	WA	12
N	B. Schuster	QNC	11

Judged By: Neil Love & John Skoric

22 ASV/ASC HENS			
CAGE ID	EXHIBITOR	STATE	PLACE
A	T. Philpott	TAS	11
B	L&P Walmsley	QNC	14
C	G & D Armstrong	WA	4
D	Kakoschke & Rice	SA	7
E	Ian Hanington	NSW	8
F	J Leong	VIC	5
G	H George	SQ	1
H	B Smith	SQ	3
I	Sheppard & Flanagan	VIC	2
J	M Chidel	NSW	6
K	M Loveridge	SA	13
L	G & D Armstrong	WA	9
M	D&S Brooks	QNC	12
N	J & J Fletcher	TAS	10

Judged By: Matt Campbell & Ian Schneider

35th Annual Australian National Budgerigar Show

20 Years of the ANBC Championships - 1990 to 2009 Results

Burnie, Tasmania - May 2009

	1990	1991	1992	1993	1994	1995	1996	1997	1998	1999	2000	2001	2002	2003	2004	2005	2006	2007	2008	2009
Tasmania	200	220	171	175	226	206	248	203	231	304	237	268	221	242	262	317	318	265	244	226
Queensland North & Central	194	200	206	174	142	218	170	220	177	237	203	188	200	172	237	181	213	185	197	233
Victoria	321	323	349	336	336	329	299	337	341	353	391	361	364	385	415	393	418	433	456	467
New South Wales	287	255	297	302	327	359	294	314	333	327	382	342	338	361	464	482	484	428	452	442
South Queensland	305	288	297	270	276	312	285	249	323	283	263	331	304	350	400	377	392	381	430	387
South Australia	186	150	219	281	226	127	205	171	168	182	203	214	217	195	246	294	231	302	190	299
Western Australia	181	139	141	148	147	127	178	186	212	203	211	185	246	290	286	266	254	304	341	254



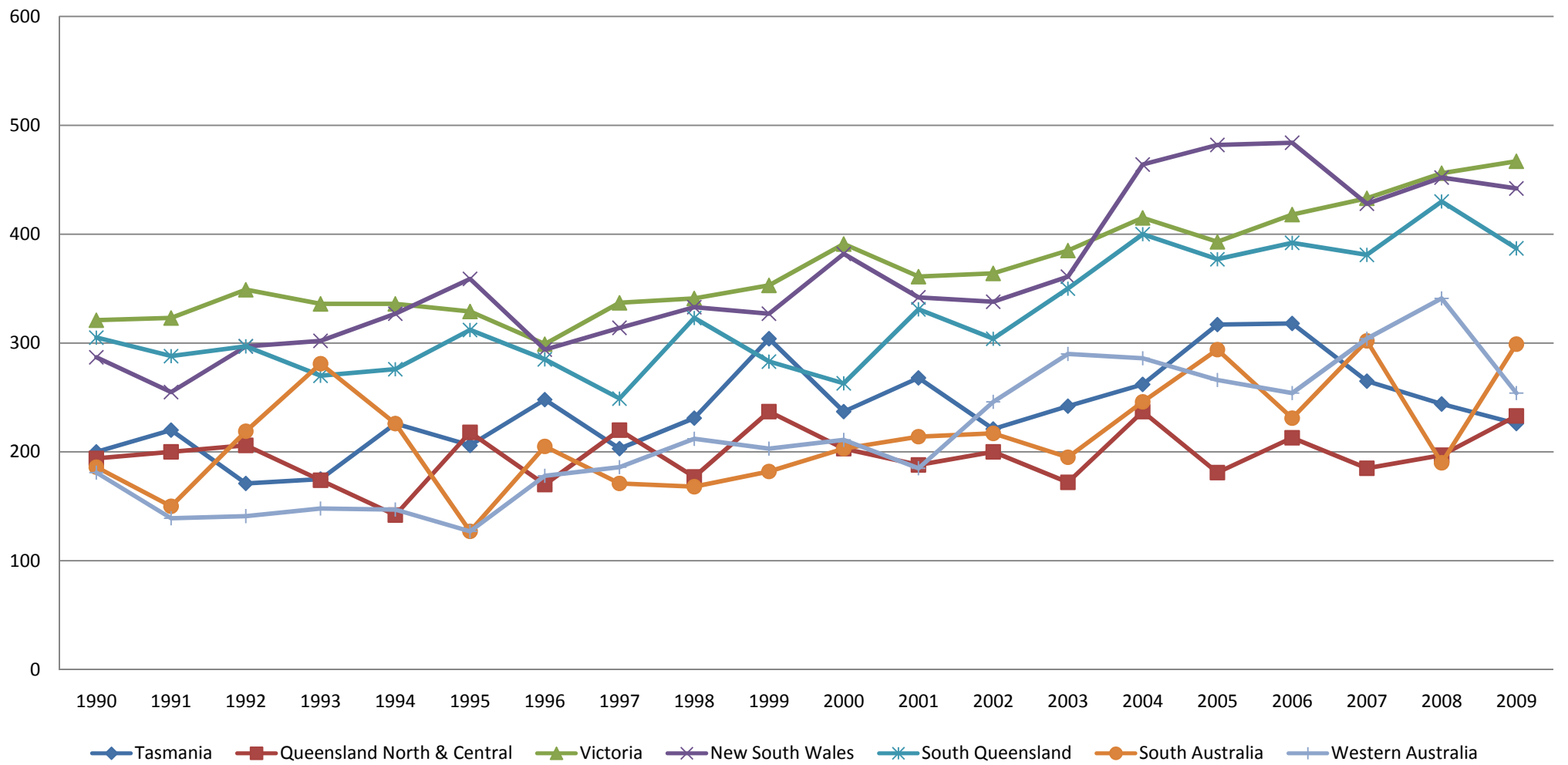
Hosting the 35th Annual Australian National Budgerigar Show

See our website for all the latest information and results: <http://www.national2009.com>

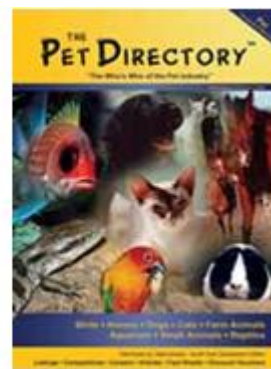
35th Annual Australian National Budgerigar Show

20 Years of the ANBC Championships - 1990 to 2009 State Results Graph

Burnie, Tasmania - May 2009



The Budgerigar Council of Tasmania
wishes to thank our sponsors



Harvey Norman



CHAPMAN
RINGS
&
PETCARE
DIRECT